




Ceiling-Mounted LCD Projector

Aim the Sharp remote control at the projector and press the blue **ON** button to turn it on. The projector will need approximately 30 seconds to warm up.



Motorized Projection Screen

This room is equipped with a motorized projection screen. Raise and lower the screen using the control panel located on the side of the podium.

Podium Monitor

This room is equipped with a HP E220t touch screen monitor. It is powered on/off by pressing the power  button located in the lower right corner. You can use either a stylus or your finger to interact with the screen.

Podium Computer

The computer is located on the top shelf inside the podium. If needed, press the power  button (located on the left-side of the computer) to turn it on. USB ports are to the right of the power  button.

Once the computer is on, the image should appear on both the ceiling-mounted LCD projector and podium monitor.

If there's no image on the projector, press the **INPUT 1** button on the Sharp remote control.



**Sharp Remote
ON Button**



Screen Control



Monitor's Power Button



Computer's Power Button



**Sharp Remote
INPUT 1 Button**

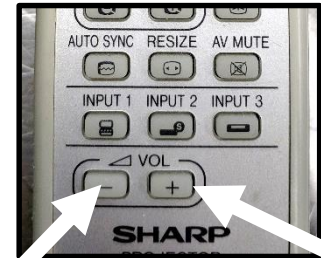


Volume Control

On the Sharp remote control press the **VOL +** to increase volume and the **VOL -** button to decrease it.

If needed, volume controls on the computer itself can also be adjusted.

Please Note: The projector must be turned on in order for audio to play through the room's speakers.



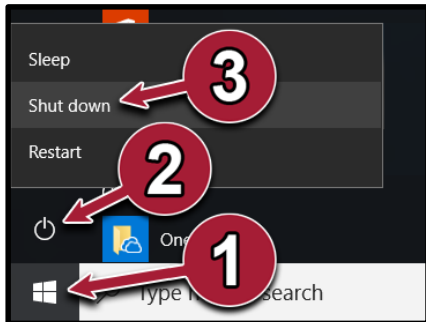
Sharp Remote Control Volume Buttons

Before Leaving the Room...

Room PC

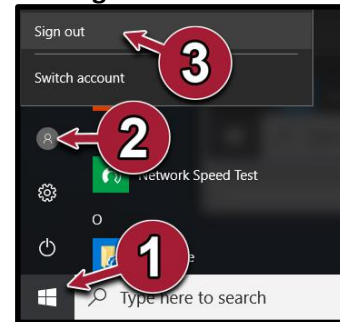
If you used the room's computer make sure that you either shut down or sign out of the machine.

Shut down the Room PC



1. Open the **Start Menu**
2. Click on the **Power** button
3. Click **Shut down**

Sign out of the PC



1. Open the **Start Menu**
2. Click on the **User** button
3. Click **Sign out**

Ceiling-Mounted LCD Projector

Aim the Sharp remote control at the projector and press the red **STANDBY** button twice to turn it off. The projector will need to cool down fully before it can be turned back on.



Sharp Remote STANDBY Button