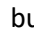




## Wall-Mounted Short Throw LCD Projector

Aim the black Hitachi remote control (R020H) at the projector and press the red power  button to turn it on. The projector will need approximately 30 seconds to warm up.

**I pressed the power  button on the Hitachi remote control, but the projector did not turn on. What do I do?**

*Check the POWER status LED on the projector to see if the projector is ready to be turned on.*

**Amber (Blinking):** Projector was just turned off and is cooling down; wait for the light to turn solid amber before trying to turn the projector back on.

**Amber (Solid):** Projector is ready to be turned on.

**Green (Blinking):** Projector received the command to turn on and is in the process of doing so.

**Green (Solid):** Projector is on.

**Red (Solid or Blinking):** Contact Classroom Support at x2552.



Hitachi Remote  
Power Button



Projector Status LEDs




Monitor's Power Button

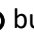
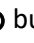


Computer's Power Button

## Podium Monitor

This room is equipped with a HP E220t touch screen monitor. It is powered on/off by pressing the power  button located in the lower right corner. You can use either a stylus or your finger to interact with the screen.

## Podium Computer

The computer is located on a counter top in the front of the room. If needed, press the power  button (located on the left-side of the computer) to turn it on. USB ports are to the right of the power  button.

Once the computer is on, the image should appear on both the wall-mounted LCD projector and podium monitor.

If there's no image on the projector, press the **INPUT** button on the Hitachi remote control until the projector is set to **HDMI 1**.

However, if the computer has been changed to display with an extended desktop you will need to press the **Windows logo key + P** on the keyboard until **Duplicate** is selected.



Hitachi Remote  
INPUT Button



## Volume Control

On the Hitachi remote control press the **VOLUME +** to increase volume and the **VOLUME -** button to decrease it.

AV Mute, which will blank the image on the screen as well as mute audio, is toggled on/off with the **AV MUTE** button.

If needed, volume controls on the computer itself can also be adjusted.



**Hitachi Remote Control  
Volume Buttons**

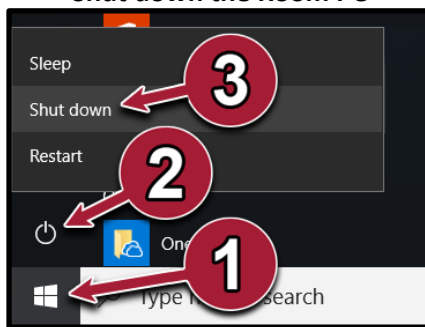
**Please Note:** The projector must be turned on in order for audio to play the through the room's speakers.

## Before Leaving the Room...

### Room PC

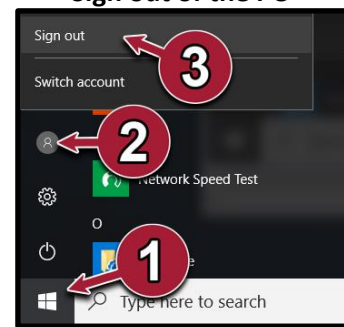
If you used the room's computer make sure that you either shut down or sign out of the machine.


#### Shut down the Room PC



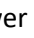
1. Open the **Start Menu**
2. Click on the **Power** button
3. Click **Shut down**

#### Sign out of the PC



1. Open the **Start Menu**
2. Click on the User button 
3. Click **Sign out**

## Wall-Mounted Short Throw LCD Projector

Aim the Hitachi remote control at the projector and press the red power  button twice to turn it off. The projector will need approximately 75 seconds to cool down before it can be turned back on.



**Hitachi Remote  
Power Button**